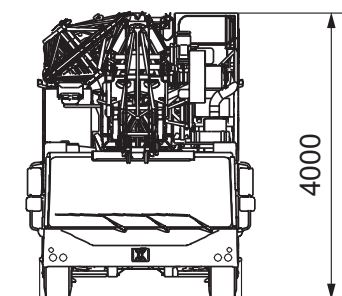
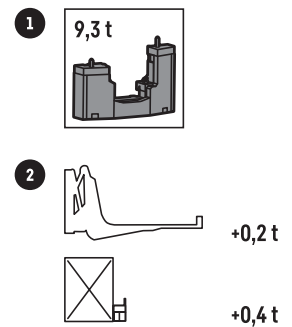
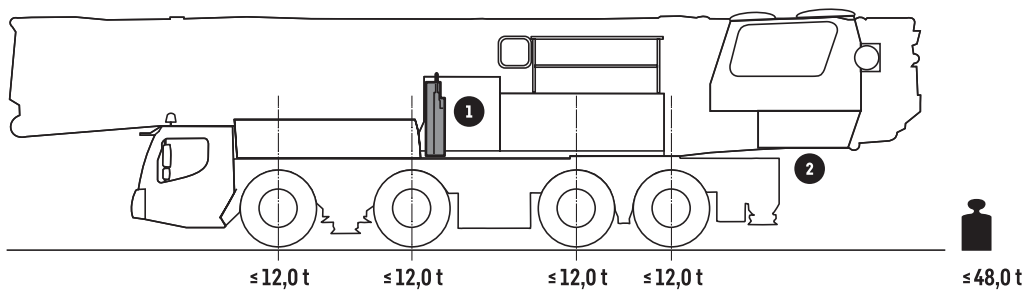
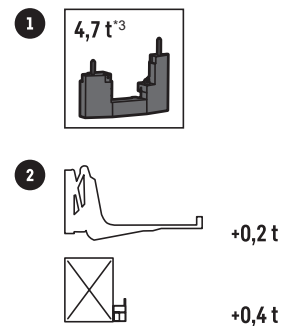
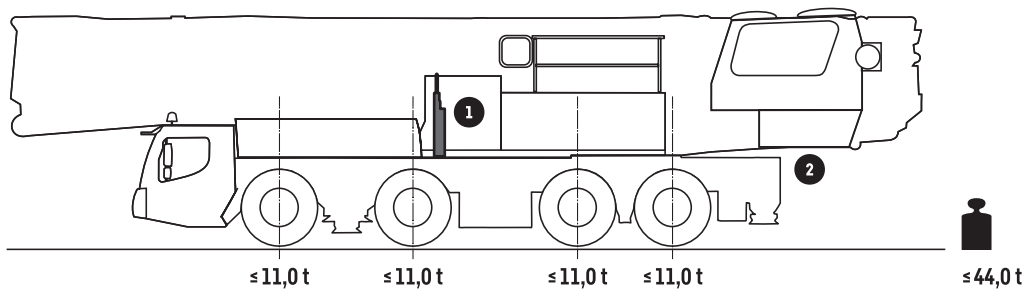
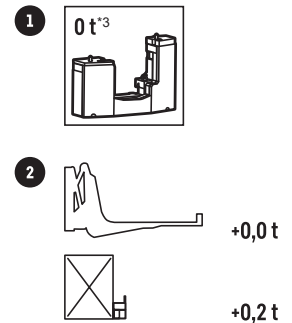
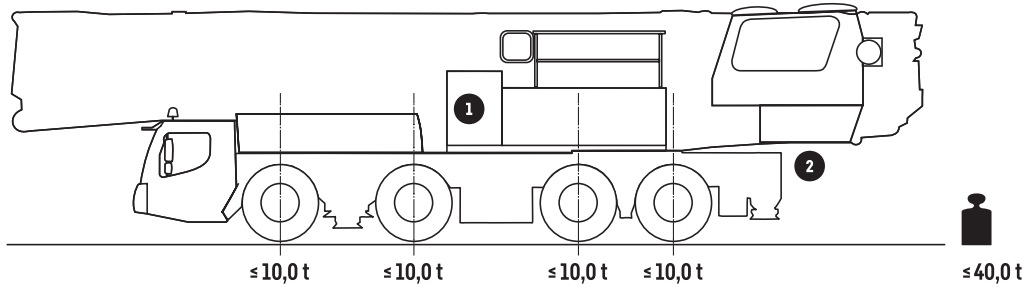


\*mit Zusatzballast



## Straßenfahrt



### Arbeitsgeschwindigkeiten

Hub	0 – 82 m/min für 2-Strang
Katzfahrwerk	0 – 67 m/min
Schwenken	0 – 1,0 min <sup>-1</sup>
Aufbau	11:20 min
Auslegerstellung	2:20 min von 0° bis 45°

### Stromanschluss

Stromanschluss		RCD	U	f	P
CEE 63 A	131 m – 5 x 16 mm <sup>2</sup>	Typ B / 300 mA	400 V	50 Hz	45 kVA
CEE 32 A	75 m – 5 x 6 mm <sup>2</sup>	Typ A / 30 mA	400 V	50 Hz	21 kVA

